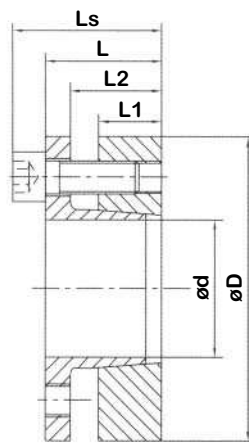
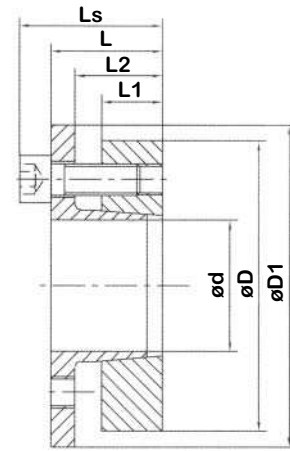


Locking Ring Type 8 (Metric)



LA8A



LA8(B)

LA8 (A & B)

Ød x ØD	Fundamental Dimensions					Internal Hexagon Headed Bolt		Rated Load		Pf N/mm ²	MA N M	G kg
	L1	L	L2	Ls	D1	Sizes	Qty	Ft KN	Mt KN M			
14/55	17	30	22	38	62	M8 x 25	3	18.0	0.127	208	25	0.81
16/55	17	30	22	38	62	M8 x 25	3	18.0	0.142	181	25	0.87
18/55	17	30	22	38	62	M8 x 25	3	18.0	0.157	161	25	0.94
19/55	17	30	22	38	62	M8 x 25	3	18.0	0.165	152	25	1.02
20/55	17	30	22	38	62	M8 x 25	3	18.0	0.172	145	25	1.06
22/55	17	30	22	38	62	M8 x 25	3	25.5	0.285	186	35	1.70
24/55	17	30	22	38	62	M8 x 25	3	25.5	0.307	170	35	1.79
25/55	17	30	22	38	62	M8 x 25	3	25.5	0.315	163	35	1.89
28/55	17	30	22	38	62	M8 x 25	3	31.5	0.435	175	41	1.98
30/55	17	30	22	38	62	M8 x 25	3	31.5	0.472	163	41	2.15
24/65	17	30	22	38	72	M8 x 25	5	37.4	0.440	244	30	0.94
25/65	17	30	22	38	72	M8 x 25	5	37.4	0.460	234	30	1.02
28/65	17	30	22	38	72	M8 x 25	5	43.6	0.600	243	35	1.06
30/65	17	30	22	38	72	M8 x 25	5	43.6	0.640	227	35	1.70
32/65	17	30	22	38	72	M8 x 25	5	43.6	0.690	213	35	1.79
35/65	17	30	22	38	72	M8 x 25	5	52.5	0.910	234	41	1.89
38/65	17	30	22	38	72	M8 x 25	5	52.5	1.050	216	41	1.98
40/65	17	30	22	38	72	M8 x 25	5	52.5	1.150	205	41	2.15
30/80	20	33	25	41	87	M8 x 25	7	52.5	0.780	232	30	1.70
32/80	20	33	25	41	87	M8 x 25	7	52.5	0.830	218	30	1.79
35/80	20	33	25	41	87	M8 x 25	7	61.0	1.060	232	35	1.89
38/80	20	33	25	41	87	M8 x 25	7	61.0	1.150	214	35	1.98
40/80	20	33	25	41	87	M8 x 25	7	61.0	1.220	203	41	2.15
42/80	20	33	25	41	87	M8 x 25	7	73.5	1.540	233	41	2.24
45/80	20	33	25	41	87	M8 x 25	7	73.5	1.650	217	41	3.07
48/80	20	33	25	41	87	M8 x 25	7	73.5	1.760	203	41	3.35
50/80	20	33	25	41	87	M8 x 25	7	73.5	1.830	195	41	3.59

Ordering Example: LA8A-14/55

LA8A = Type
14 = ød
55 = øD