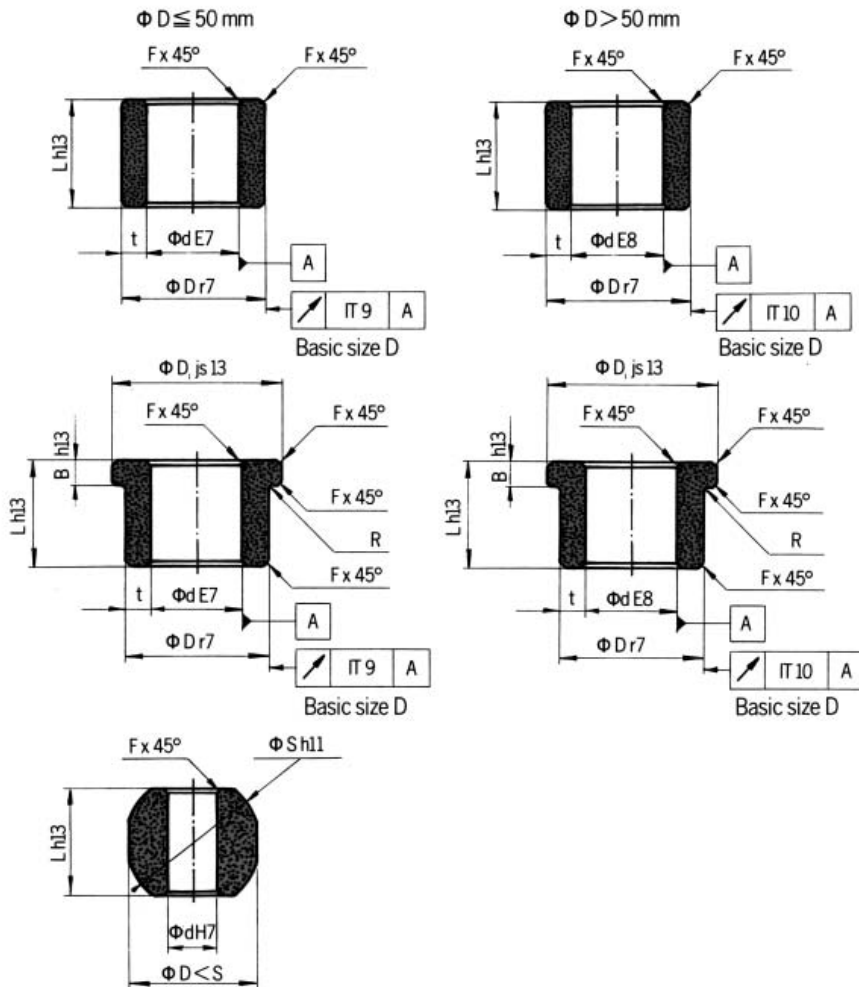


Bearing Tolerance

ISO tolerances

Basic sizes (over) - to	Internal dimensions				External dimensions									
	E7	E8	F7	H7	g6	h8	h11	h13	h14	js13	r7	r8	IT9	IT10
-3	+24 +14	+28 +14	+16 +6	+10 0	-2 -8	0 -14	0 -60	0 -140	0 -250	+70 -70	+20 +10	+24 +10	25	40
(3)-6	+32 +20	+38 +20	+22 +10	+12 0	-4 -12	0 -18	0 -75	0 -180	0 -300	+90 -90	+27 +15	+33 +15	30	48
(6)-10	+40 +25	+47 +25	+28 +13	+15 0	-5 -14	0 -22	0 -90	0 -220	0 -360	+110 -110	+34 +19	+41 +19	36	58
(10)-18	+50 +32	+59 +32	+34 +16	+18 0	-6 -17	0 -27	0 -110	0 -270	0 -430	+135 -135	+41 +23	+50 +23	43	70
(18)-30	+61 +40	+73 +40	+41 +20	+21 0	-7 -20	0 -33	0 -130	0 -330	0 -520	+165 -165	+49 +28	+61 +28	52	84
(30)-50	+75 +50	+89 +50	+50 +25	+25 0	-9 -25	0 -39	0 -160	0 -390	0 -620	+195 -195	+59 +34	+73 +34	62	100
(50)-65	+90 +60	+106 +60	+60 +30	+30 0	-10 -29	0 -46	0 -190	0 -460	0 -740	+230 -230	+71 +41	+87 +41	74	120
(65)-80											+73 +43	+89 +43		
(80)-100	+107 +72	+126 +72	+71 36	+35 0	-12 -34	0 -54	0 -220	0 -540	0 -870	+270 -270	+86 +51	+105 +51	87	140
(100)-120											+89 +54	+108 +54		



Stock sizes

Most sizes corresponding to ISO 2795 are available from stock.

Special sizes

Many special sizes and tolerances can be manufactured from existing tooling by special order.

Tolerances

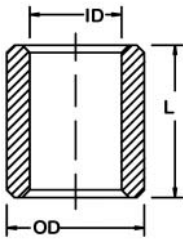
The sketches to the left show the normal tolerances for self-lubricating standard bearings.

Exceptions:

Length tolerance h14 for bearings with wall thickness $t \leq 2\text{mm}$.

ESSEM Graphite-Bronze diameter tolerances dE8/Dr8, length tolerance h14, radial run-out IT 10 TIR.

Any deviation from these standards must be specified in enquiries and orders.



Metric Sleeve Bearing

DIN 1850 Form J Sinterbronze

Oil Impregnated Bronze

ASTM: B-438-73 Gr 1 Type II



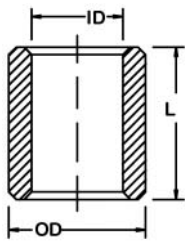
Part No.	ID	OD	L	Part No.	ID	OD	L	Part No.	ID	OD	L	Part No.	ID	OD	L
1.5-4x7	1.5	4	7	5-12x10	5	12	10	8-12x16	8	12	16	10-16x15	10	16	15
2-4x4	2	4	4	6-8x8	6	8	8	8-12x20	8	12	20	10-16x16	10	16	16
2-5x2	2	5	2	6-9x4	6	9	4	8-12x24	8	12	24	10-16x20	10	16	20
2-5x3	2	5	3	6-9x6	6	9	6	8-13x10	8	13	10	10-16x25	10	16	25
2.5-6x8	2.5	6	8	6-9x8	6	9	8	8-13.5x9	8	13.5	9	10-16x30	10	16	30
3-6x4	3	6	4	6-9x10	6	9	10	8-14x8	8	14	8	10-20x30	10	20	30
3-6x5	3	6	5	6-9x12	6	9	12	8-14x12	8	14	12	10-22x20	10	22	20
3-6x6	3	6	6	6-9x15	6	9	15	8-14x14	8	14	14	11-14x12.5	11	14	12.5
3-6x10	3	6	10	6-9x16	6	9	16	8-14x16	8	14	16	12-14x9	12	14	9
3-8x4	3	8	4	6-9x18	6	9	18	8-14x20	8	14	20	12-14x12	12	14	12
3-8x6	3	8	6	6-10x4	6	10	4	8-16x10	8	16	10	12-14x14	12	14	14
4-6x10	4	6	10	6-10x6	6	10	6	8-16x25	8	16	25	12-14x16	12	14	16
4-6x17	4	6	17	6-10x10	6	10	10	8-18x16	8	18	16	12-15x8	12	15	8
4-7x4	4	7	4	6-10x12	6	10	12	9-12x6	9	12	6	12-15x12	12	15	12
4-7x8	4	7	8	6-10x14	6	10	14	9-12x10	9	12	10	12-15x12.8	12	15	12.8
4-7x10	4	7	10	6-10x16	6	10	16	9-12x14	9	12	14	12-15x15	12	15	15
4-7x12	4	7	12	6-12x6	6	12	6	9-12x15	9	12	15	12-15x16	12	15	16
4-7x16	4	7	16	6-12x8	6	12	8	9-12x18	9	12	18	12-15x18	12	15	18
4-8x4	4	8	4	6-12x10	6	12	10	9-13x10	9	13	10	12-15x20	12	15	20
4-8x6	4	8	6	6-12x11	6	12	11	9-14x8	9	14	8	12-15x25	12	15	25
4-8x8	4	8	8	6-12x12	6	12	12	9-14x16	9	14	16	12-16x8	12	16	8
4-8x10	4	8	10	6-12x15	6	12	15	10-12x10	10	12	10	12-16x12	12	16	12
4-8x12	4	8	12	6-12x16	6	12	16	10-12x11	10	12	11	12-16x15	12	16	15
4-10x8	4	10	8	6-12x25	6	12	25	10-12x12	10	12	12	12-16x16	12	16	16
4-10x10	4	10	10	6-14x12	6	14	12	10-12x20	10	12	20	12-16x20	12	16	20
4-12x8	4	12	8	7-9x14	7	9	14	10-13x10	10	13	10	12-16x25	12	16	25
5-7x7	5	7	7	7-10x5	7	10	5	10-13x12	10	13	12	12-16x27	12	16	27
5-8x5	5	8	5	7-10x8	7	10	8	10-13x16	10	13	16	12-16x30	12	16	30
5-8x8	5	8	8	7-10x10	7	10	10	10-13x18	10	13	18	12-17x10	12	17	10
5-8x10	5	8	10	7-11x8	7	11	8	10-13x20	10	13	20	12-17x12	12	17	12
5-8x12	5	8	12	7-11x13	7	11	13	10-13x25	10	13	25	12-17x16	12	17	16
5-8x15	5	8	15	7-11x14	7	11	14	10-14x8	10	14	8	12-17x18	12	17	18
5-8x16	5	8	16	7-13x22	7	13	22	10-14x10	10	14	10	12-17x20	12	17	20
5-9x4	5	9	4	7-14x10	7	14	10	10-14x14	10	14	14	12-17x21	12	17	21
5-9x5	5	9	5	8-10x8	8	10	8	10-14x15	10	14	15	12-17x25	12	17	25
5-9x8	5	9	8	8-11x6	8	11	6	10-14x16	10	14	16	12-18x8	12	18	8
5-9x9	5	9	9	8-11x8	8	11	8	10-14x18	10	14	18	12-18x10	12	18	10
5-9x11	5	9	11	8-11x12	8	11	12	10-14x20	10	14	20	12-18x12	12	18	12
5-10x5	5	10	5	8-11x16	8	11	16	10-14x25	10	14	25	12-18x16	12	18	16
5-10x6	5	10	6	8-11x20	8	11	20	10-15x10	10	15	10	12-18x18	12	18	18
5-10x8	5	10	8	8-12x6	8	12	6	10-15x16	10	15	16	12-18x20	12	18	20
5-10x10	5	10	10	8-12x8	8	12	8	10-15x20	10	15	20	12-18x25	12	18	25
5-10x14	5	10	14	8-12x10	8	12	10	10-15x25	10	15	25	12-18x30	12	18	30
				8-12x12	8	12	12	10-16x8	10	16	8	12-20x16	12	20	16
				8-12x14	8	12	14	10-16x10	10	16	10	12-24x30	12	24	30

Tolerance: Tolerances may vary for some sizes due to different molds available at time of manufacture.

Note: Inquire for additional standard and non-standard sizes. Cast bronze and steel bushings also available by special request.

Part No. = ID - OD x LENGTH





Metric Sleeve Bearing

DIN 1850 Form J Sinterbronze

Oil Impregnated Bronze

ASTM: B-438-73 Gr 1 Type II

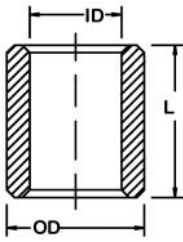


Part No.	ID	OD	L	Part No.	ID	OD	L	Part No.	ID	OD	L	Part No.	ID	OD	L
12-25x25	12	25	25	15-22x15	15	22	15	18-24x24	18	24	24	20-28x16	20	28	16
13-16x19	13	16	19	15-22x16	15	22	16	18-24x25	18	24	25	20-28x20	20	28	20
14-18x10	14	18	10	15-22x20	15	22	20	18-24x28	18	24	28	20-28x25	20	28	25
14-18x14	14	18	14	15-22x22	15	22	22	18-24x30	18	24	30	20-28x28	20	28	28
14-18x15	14	18	15	15-22x25	15	22	25	18-24x36	18	24	36	20-28x30	20	28	30
14-18x18	14	18	18	15-22x30	15	22	30	18-24x40	18	24	40	20-28x32	20	28	32
14-18x19	14	18	19	15-24x30	15	24	30	18-25x16	18	25	16	20-28x40	20	28	40
14-18x20	14	18	20	15-25x18	15	25	18	18-25x20	18	25	20	20-30x20	20	30	20
14-18x22	14	18	22	15-30x30	15	30	30	18-25x22	18	25	22	20-30x30	20	30	30
14-18x26	14	18	26	16-18x22	16	18	22	18-25x28	18	25	28	20-30x45	20	30	45
14-18x28	14	18	28	16-19x14.2	16	19	14.2	18-25x30	18	25	30	20-40x40	20	40	40
14-20x10	14	20	10	16-19x19	16	19	19	18-25x36	18	25	36	22-25x20	22	25	20
14-20x12	14	20	12	16-20x12	16	20	12	18-28x40	18	28	40	22-25x35	22	25	35
14-20x14	14	20	14	16-20x16	16	20	16	18-35x30	18	35	30	22-26x22	22	26	22
14-20x15	14	20	15	16-20x20	16	20	20	19-25x25	19	25	25	22-26x26	22	26	26
14-20x18	14	20	18	16-20x25	16	20	25	20-23x24	20	23	24	22-26x28	22	26	28
14-20x20	14	20	20	16-20x28	16	20	28	20-24x16	20	24	16	22-27x15	22	27	15
14-20x22	14	20	22	16-20x30	16	20	30	20-24x20	20	24	20	22-27x18	22	27	18
14-20x25	14	20	25	16-20x32	16	20	32	20-24x24	20	24	24	22-27x20	22	27	20
14-20x28	14	20	28	16-20x36	16	20	36	20-24x25	20	24	25	22-27x22	22	27	22
14-20x30	14	20	30	16-20x45	16	20	45	20-24x27	20	24	27	22-27x25	22	27	25
14-28x30	14	28	30	16-22x12	16	22	12	20-24x30	20	24	30	22-27x28	22	27	28
15-17x20	15	17	20	16-22x16	16	22	16	20-24x32	20	24	32	22-27x36	22	27	36
15-18x12	15	18	12	16-22x20	16	22	20	20-25x15	20	25	15	22-28x18	22	28	18
15-18x20	15	18	20	16-22x22	16	22	22	20-25x16	20	25	16	22-28x20	22	28	20
15-18x22	15	18	22	16-22x25	16	22	25	20-25x20	20	25	20	22-28x22	22	28	22
15-19x10	15	19	10	16-22x30	16	22	30	20-25x22	20	25	22	22-28x28	22	28	28
15-19x15	15	19	15	16-22x32	16	22	32	20-25x25	20	25	25	22-28x30	22	28	30
15-19x16	15	19	16	16-22x45	16	22	45	20-25x28	20	25	28	22-28x36	22	28	36
15-19x20	15	19	20	16-32x30	16	32	30	20-25x30	20	25	30	22-28x40	22	28	40
15-19x25	15	19	25	17-21x22	17	21	22	20-25x32	20	25	32	22-29x18	22	29	18
15-19x32	15	19	32	17-21x32	17	21	32	20-25x34	20	25	34	22-29x19	22	29	19
15-20x10	15	20	10	17-22x17	17	22	17	20-25x35	20	25	35	22-29x22	22	29	22
15-20x12	15	20	12	17-25x25	17	25	25	20-25x40	20	25	40	22-29x28	22	29	28
15-20x15	15	20	15	18-22x12	18	22	12	20-26x15	20	26	15	22-29x36	22	29	36
15-20x20	15	20	20	18-22x18	18	22	18	20-26x16	20	26	16	22-30x40	22	30	40
15-20x24	15	20	24	18-22x22	18	22	22	20-26x20	20	26	20	22-32x20	22	32	20
15-20x25	15	20	25	18-22x28	18	22	28	20-26x25	20	26	25	22-32x30	22	32	30
15-20x28	15	20	28	18-22x30	18	22	30	20-26x26	20	26	26	22-32x45	22	32	45
15-20x30	15	20	30	18-22x36	18	22	36	20-26x30	20	26	30	24-28x30	24	28	30
15-20x36	15	20	36	18-22x40	18	22	40	20-26x32	20	26	32	24-30x30	24	30	30
15-21x10	15	21	10	18-24x12	18	24	12	20-26x40	20	26	40	25-30x20	25	30	20
15-21x15	15	21	15	18-24x17	18	24	17	20-27x16	20	27	16	25-30x25	25	30	25
15-21x16	15	21	16	18-24x18	18	24	18	20-27x20	20	27	20	25-30x28	25	30	28
15-21x20	15	21	20	18-24x22	18	24	22	20-27x25	20	27	25	25-30x30	25	30	30
15-21x21	15	21	21	18-24x22	18	24	22	20-27x32	20	27	32				

Tolerance: Tolerances may vary for some sizes due to different molds available at time of manufacture.

Note: Inquire for additional standard and non-standard sizes. Cast bronze and steel bushings also available by special request.

Part No. = ID - OD x LENGTH



Metric Sleeve Bearing

DIN 1850 Form J Sinterbronze

Oil Impregnated Bronze

ASTM: B-438-73 Gr 1 Type II



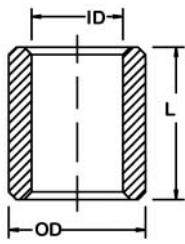
Part No.	ID	OD	L	Part No.	ID	OD	L	Part No.	ID	OD	L	Part No.	ID	OD	L
25-30x32	25	30	32	30-35x40	30	35	40	35-44x22	35	44	22	45-52x40	45	52	40
25-30x35	25	30	35	30-35x43	30	35	43	35-44x28	35	44	28	45-55x35	45	55	35
25-30x40	25	30	40					35-44x35	35	44	35	45-55x40	45	55	40
25-30x45	25	30	45	30-38x15	30	38	15	35-45x25	35	45	25	45-55x45	45	55	45
25-30x50	25	30	50	30-38x20	30	38	20	35-45x35	35	45	35	45-55x50	45	55	50
				30-38x24	30	38	24	35-45x40	35	45	40	45-55x55	45	55	55
25-32x20	25	32	20	30-38x25	30	38	25	35-45x45	35	45	45	45-55x60	45	55	60
25-32x25	25	32	25	30-38x30	30	38	30	35-45x50	35	45	50	45-55x65	45	55	65
25-32x30	25	32	30	30-38x38	30	38	38	35-45x70	35	45	70	45-55x75	45	55	75
25-32x32	25	32	32	30-38x40	30	38	40	35-50x50	35	50	50				
25-32x35	25	32	35	30-38x45	30	38	45					45-56x28	45	56	28
25-32x40	25	32	40	30-38x50	30	38	50	36-42x22	36	42	22	45-56x36	45	56	36
				30-38x60	30	38	60	36-42x28	36	42	28	45-56x45	45	56	45
25-35x15	25	35	15	30-40x25	30	40	25	36-42x36	36	42	36	45-56x56	45	56	56
25-35x20	25	35	20	30-40x30	30	40	30	36-42x45	36	42	45	45-65x80	45	65	80
25-35x25	25	35	25	30-40x40	30	40	40	36-45x22	36	45	22	50-54x45	50	54	45
25-35x35	25	35	35	30-40x45	30	40	45	36-45x28	36	45	28	50-56x32	50	56	32
25-35x38	25	35	38	30-40x50	30	40	50	36-45x36	36	45	36	50-56x40	50	56	40
25-35x40	25	35	40	30-40x60	30	40	60	36-45x45	36	45	45	50-56x50	50	56	50
25-35x50	25	35	50					36-50x50	36	50	50	50-56x63	50	56	63
25-36x50	25	36	50	30-41x55	30	41	55	38-44x25	38	44	25	50-60x32	50	60	32
								38-44x35	38	44	35	50-60x35	50	60	35
25-45x35	25	45	35	30-50x60	30	50	60	38-44x45	38	44	45	50-60x40	50	60	40
								38-44x50	38	44	50	50-60x50	50	60	50
26-30x40	26	30	40	32-35x40	32	35	40	40-30x36	40	30	36	50-60x60	50	60	60
								40-45x50	40	45	50	50-60x63	50	60	63
26-35x45	26	35	45	32-38x20	32	38	20	40-46x25	40	46	25	50-60x70	50	60	70
				32-38x25	32	38	25	40-46x30	40	46	30	50-60x75	50	60	75
28-32x22	28	32	22	32-38x28	32	38	28	40-46x32	40	46	32	50-60x100	50	60	100
28-32x28	28	32	28	32-38x32	32	38	32	40-46x40	40	46	40	50-70x70	50	70	70
28-32x30	28	32	30	32-38x40	32	38	40	40-46x50	40	46	50	55-65x40	55	65	40
28-32x36	28	32	36	32-38x50	32	38	50	40-50x25	40	50	25	55-65x55	55	65	55
28-32x45	28	32	45					40-50x30	40	50	30	55-65x60	55	65	60
				32-40x20	32	40	20	40-50x32	40	50	32	55-65x65	55	65	65
28-33x22	28	33	22	32-40x25	32	40	25	40-50x35	40	50	35	55-65x70	55	65	70
28-33x28	28	33	28	32-40x32	32	40	32	40-50x40	40	50	40	55-66x56	55	66	56
28-33x36	28	33	36	32-40x40	32	40	40	40-50x50	40	50	50	55-70x70	55	70	70
28-33x45	28	33	45	32-40x50	32	40	50	40-50x60	40	50	60				
				32-45x50	32	45	50	40-50x80	40	50	80	60-68x50	60	68	50
28-35x32	28	35	32					40-60x60	40	60	60	60-68x60	60	68	60
28-36x22	28	36	22	34-40x50	34	40	50	45-51x28	45	51	28	60-68x70	60	68	70
28-36x28	28	36	28					45-51x35	45	51	35	60-70x50	60	70	50
28-36x36	28	36	36	35-40x30	35	40	30	45-51x36	45	51	36	60-70x60	60	70	60
28-36x45	28	36	45	35-40x35	35	40	35	45-51x45	45	51	45	60-70x90	60	70	90
				35-40x40	35	40	40	45-51x55	45	51	55	60-70x120	60	70	120
28-40x50	28	40	50	35-40x45	35	40	45	45-51x56	45	51	56				
				35-41x25	35	41	25								
30-33x35	30	33	35	35-41x35	35	41	35								
30-33x45	30	33	45	35-41x40	35	41	40								
30-35x15	30	35	15												
30-35x20	30	35	20	35-42x35	35	42	35								
30-35x25	30	35	25	35-42x42	35	42	42								
30-35x30	30	35	30	35-42x50	35	42	50								
30-35x35	30	35	35												

Tolerance: Tolerances may vary for some sizes due to different molds available at time of manufacture.

Note: Inquire for additional standard and non-standard sizes. Cast bronze and steel bushings also available by special request.

Part No. = ID - OD x LENGTH





Metric Sleeve Bearing

DIN 1850 Form J Sinterbronze

Oil Impregnated Bronze

ASTM: B-438-73 Gr 1 Type II



Part No.	ID	OD	L	Part No.	ID	OD	L	Part No.	ID	OD	L	Part No.	ID	OD	L
60-72x50	60	72	50	85-95x100	85	95	100								
60-72x60	60	72	60	85-100x100	85	100	100								
60-72x63	60	72	63	90-105x80	90	105	80								
60-72x70	60	72	70	90-110x80	90	110	80								
60-75x60	60	75	60	90-110.3x65	90	110.3	65								
60-75x90	60	75	90	100-120x80	100	120	80								
60-80x90	60	80	90	100-120x120	100	120	120								
60-80x120	60	80	120	100-120.3x65	100	120.3	65								
60-85x90	60	85	90	110-123.5x65	110	123.5	65								
63-70x40	63	70	40	110-125x120	110	125	120								
63-70x50	63	70	50	120-130x65	120	130	65								
65-75x60	65	75	60	125-150x120	125	150	120								
65-75x90	65	75	90	140-155x65	140	155	65								
65-77x63	65	77	63												
65-80x60	65	80	60												
65-80x90	65	80	90												
65-81x60	65	81	60												
70-80x60	70	80	60												
70-80x90	70	80	90												
70-80x120	70	80	120												
70-82x63	70	82	63												
70-85x60	70	85	60												
70-85x90	70	85	90												
75-85x70	75	85	70												
75-85x100	75	85	100												
75-90x60	75	90	60												
75-90x63	75	90	63												
75-90x70	75	90	70												
75-90x100	75	90	100												
75-100x100	75	100	100												
80-90x70	80	90	70												
80-90x100	80	90	100												
80-95x63	80	95	63												
80-95x70	80	95	70												
80-95x100	80	95	100												
80-96x60	80	96	60												
80-100x120	80	100	120												
80-105x100	80	105	100												

Tolerance: Tolerances may vary for some sizes due to different molds available at time of manufacture.

Note: Inquire for additional standard and non-standard sizes. bronze and steel bushings also available by special request.

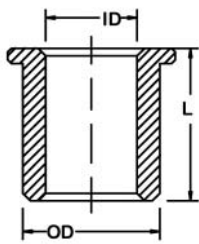
Cast

Part No. = ID - OD x LENGTH

 **American Metric® Corporation**

GROUP: 077

1-077 - 90513



Metric Flange Bearings

DIN 1850 Form V Sinterbronze

Oil Impregnated Bronze

ASTM: B-438-73 Gr 1 Type II



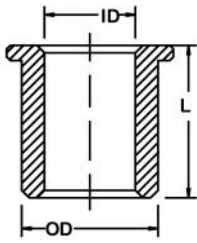
Part No.	ID	OD	L	Flange OD	Flange Thick-	Part No.	ID	OD	L	Flange OD	Flange Thick-
3-5x4-8X1.5	3	5	4	8	1.5	6-12x8-14x2	6	12	8	14	2
3-6x10-8x1	3	6	10	8	1	6-12x13-14x2	6	12	13	14	2
3-6x4-9X1.5	3	6	4	9	1.5	6-12x20-14x2	6	12	20	14	2
3-6x6-9X1.5	3	6	6	9	1.5		7				
3-6x10-9X1.5	3	6	10	9	1.5	7-12x15-15x2.5	7	12	15	15	2.5
4-6x8-8X1	4	6	8	8	1	8-11x6-12X1.5	8	11	6	12	1.5
4-7x6-10X1.5	4	7	6	10	1.5	8-11x10-12X1.5	8	11	10	12	1.5
4-7x6-12X2	4	7	6	12	2	8-11x12-12X1.5	8	11	12	12	1.5
4-7x10-12X2	4	7	10	12	2	8-11x6-14X1.5	8	11	6	14	1.5
4-8x17-9x2.5	4	8	17	9	2.5	8-11x10-14X1.5	8	11	10	14	1.5
4-8x6-10X1.5	4	8	6	10	1.5	8-11x12-14X1.5	8	11	12	14	1.5
4-8x4-12X2	4	8	4	12	2	8-12x6-16X2	8	12	6	16	2
4-8x6-12X2	4	8	6	12	2	8-12x8-16X2	8	12	8	16	2
4-8x8-12X2	4	8	8	12	2	8-12x12-16X2	8	12	12	16	2
4-8x12-12X2	4	8	12	12	2	8-12x14-16x2	8	12	14	16	2
5-8x12-11x1.4	5	8	12	11	1.4	8-12x16-16X2	8	12	16	16	2
5-8x5-12X2	5	8	5	12	2	8-13x14-16x2	8	13	14	16	2
5-8x6-12X2	5	8	6	12	2		8				
5-8x10-12X2	5	8	10	12	2	8-14x8-18X3	8	14	8	18	3
5-8x12-12X2	5	8	12	12	2	8-14x14-18x3	8	14	14	18	3
5-9x4-13X2	5	9	4	13	2	8-14x20-18x3	8	14	20	18	3
5-9x5-13X2	5	9	5	13	2		8				
5-9x8-13X2	5	9	8	13	2	8-15x20-18x2	8	15	20	18	2
5-10x6-12X2	5	10	6	12	2	9-12x15-15.5x2.5	9	12	15	15.5	2.5
5-10x15-13x2	5	10	15	13	2		9				
6-9x6-12X1.5	6	9	6	12	1.5	9-14x6-19X2.5	9	14	6	19	2.5
6-9x10-12X1.5	6	9	10	12	1.5	9-14x10-19X2.5	9	14	10	19	2.5
6-9x12-12X1.5	6	9	12	12	1.5	9-14x14-19X2.5	9	14	14	19	2.5
6-9x5-14X1.5	6	9	5	14	1.5	9-15x20-20x4.5	9	15	20	20	4.5
6-9x6-14X1.5	6	9	6	14	1.5		10				
6-9x10-14X1.5	6	9	10	14	1.5	10-12x10-14x1	10	12	10	14	1
6-9x12-14X1.5	6	9	12	14	1.5		10				
6-10x4-14X2	6	10	4	14	2	10-13x6-16X1.5	10	13	6	16	1.5
6-10x6-14X2	6	10	6	14	2	10-13x8-16X1.5	10	13	8	16	1.5
6-10x10-14X2	6	10	10	14	2	10-13x10-16X1.5	10	13	10	16	1.5
6-10x16-14X2	6	10	16	14	2	10-13x12-16X1.5	10	13	12	16	1.5
6-10x13-12x2	6	10	13	12	2	10-13x16-16X1.5	10	13	16	16	1.5
6-10x13-14x1.5	6	10	13	14	1.5	10-13x20-16X1.5	10	13	20	16	1.5
6-10x14-14x2	6	10	14	14	2	10-14x15-17.2x2.8	10	14	15	17.2	2.8
6-12x6-14X2	6	12	6	14	2		10				
						10-14x10-18x3	10	14	10	18	3
						10-14x14-18x3	10	14	14	18	3
						10-14x20-18x3	10	14	20	18	3
						10-15x20-19x2	10	15	20	19	2
							10				
						10-15x10-20X2.5	10	15	10	20	2.5
						10-15x16-20X2.5	10	15	16	20	2.5
						10-15x20-20X2.5	10	15	20	20	2.5
							10				
						10-16x30-20x2.5	10	16	30	20	2.5
							10				
						10-16x8-20X3	10	16	8	20	3
						10-16x10-20X3	10	16	10	20	3

Tolerance: Tolerances may vary for some sizes due to different molds available at time of manufacture.

Note: Inquire for additional standard and non-standard sizes. Cast bronze and steel bushings also available by special request.

Part No. = ID - OD x LENGTH - FLANGE OD x FLANGE THICKNESS





Metric Flange Bearings

DIN 1850 Form V Sinterbronze

Oil Impregnated Bronze

ASTM: B-438-73 Gr 1 Type II



Part No.	ID	OD	L	Flange OD	Flange Thick-	Part No.	ID	OD	L	Flange OD	Flange Thick-
10-16x16-20x3	10	16	10	20	3	14-20x20-26X3	14	20	18	26	3
10-16x20-20x3	10	16	16	20	3	14-20x22-26X3	14	20	20	26	3
10-16x30-20x3	10	16	20	20	3	14-20x28-26X3	14	20	22	26	3
	10	16	30	20	3		14	20	28	26	3
10-16x8-22X3	10					14-20x25-27X3					
10-16x10-22X3	10	16	8	22	3		15	20	25	27	3
10-16x12-22X3	10	16	10	22	3	15-19x15-23x2	15				
10-16x16-22X3	10	16	12	22	3	15-19x16-23X2	15	19	15	23	2
10-16x20-22X3	10	16	16	22	3	15-19x20-23X2	15	19	16	23	2
	12	16	20	22	3	15-19x25-23x2	15	19	20	23	2
12-15x7-18X1.5	12						15	19	25	23	2
12-15x12-18X1.5	12	15	7	18	1.5	15-20x30-24x2.5	15	20	30	24	2.5
12-15x16-18X1.5	12	15	12	18	1.5		15				
12-15x20-18X1.5	12	15	16	18	1.5	15-20x15-27X3	15				
12-15x25-18X1.5	12	15	20	18	1.5	15-20x25-27X3	15	20	15	27	3
	12	15	25	18	1.5		15	20	25	27	3
12-15x9-22x5	12	15	9	22	5	15-21x10-27X3	15				
12-16x12-20x2	12					15-21x15-27X3	15	21	10	27	3
12-16x16-20x2	12	16	12	20	2	15-21x16-27X3	15	21	15	27	3
12-16x25-20x2	12	16	16	20	2	15-21x20-27X3	15	21	16	27	3
	12	16	25	20	2	15-21x25-27X3	15	21	20	27	3
12-16x15-20x3	12	16	15	20	3	15-21x32-27X3	15	21	25	27	3
12-17x12-22X2.5	12						15	21	32	27	3
12-17x16-22X2.5	12	17	12	22	2.5	15-22x12-28X3	15				
12-17x20-22X2.5	12	17	16	22	2.5	15-22x15-28x3	15	22	12	28	3
12-17x25-22X2.5	12	17	20	22	2.5	15-22x16-28X3	15	22	15	28	3
	12	17	25	22	2.5	15-22x22-28x3	15	22	16	28	3
12-18x25-21.5x3.5	12	18	25	22	2.5	15-22x30-28x3	15	22	22	28	3
	12	18	25	21.5	3.5	15-30x40-38x5	15	22	30	28	3
12-18x10-22X3	12						16	30	40	38	5
12-18x12-22X3	12	18	10	22	3	16-20x12-24X2	16				
12-18x18-22x3	12	18	12	22	3	16-20x16-24X2	16	20	12	24	2
12-18x25-22x3	12	18	18	22	3	16-20x20-24X2	16	20	16	24	2
	12	18	25	22	3	16-20X25-24X2	16	20	20	24	2
12-18x8-24X3	12						16	20	25	24	2
12-18x10-24X3	12	18	8	24	3	16-22x12-28X3	16				
12-18x12-24X3	12	18	10	24	3	16-22x16-28X3	16	22	12	28	3
12-18x16-24X3	12	18	12	24	3	16-22x20-28X3	16	22	16	28	3
12-18x20-24X3	12	18	16	24	3	16-22x25-28X3	16	22	20	28	3
12-18x25-24X3	12	18	20	24	3	16-22x32-28X3	16	22	25	28	3
	13	18	25	24	3		16	22	32	28	3
13-18x16-23x5	13					16-22x16-28x3.5	16				
13-18x25-23x5	13	18	16	23	5	16-22x22-28x3.5	16	22	16	28	3.5
	14	18	25	23	5	16-22x30-28x3.5	16	22	22	28	3.5
14-18x12-22X2	14						16	22	30	28	3.5
14-18x14-22X2	14	18	12	22	2	16-22x12-28X4	16				
14-18x18-22X2	14	18	14	22	2	16-22x16-28X4	16	22	12	28	4
14-18x20-22X2	14	18	18	22	2		17	22	16	28	4
14-18x22-22X2	14	18	20	22	2	17-22x30-26x2	17				
14-18x25-22X2	14	18	22	22	2		18	22	30	26	2
	14	18	25	22	2	18-22x18-26X2	18				
14-20x25-24x4	14	20	25	24	4	18-22x20-26X2	18	22	18	26	2
14-20x10-25X3	14					18-22x22-26X2	18	22	20	26	2
14-20x12-25X3	14	20	10	25	3	18-22x25-26X2	18	22	22	26	2
	14	20	12	25	3	18-22x28-26X2	18	22	25	26	2
14-20x10-26X3	14						18	22	28	26	2
14-20x14-26X3	14	20	10	26	3	18-22x18-28x3	18				
14-20x18-26X3	14	20	14	26	3	18-24x12-30X3	18	22	18	28	3
								24	12	30	3

Tolerance: Tolerances may vary for some sizes due to different molds available at time of manufacture.

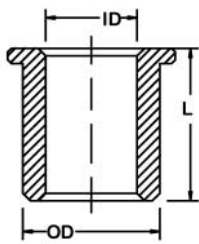
Note: Inquire for additional standard and non-standard sizes. Cast bronze and steel bushings also available by special request.

Part No. = ID - OD x LENGTH - FLANGE OD x FLANGE THICKNESS

 American Metric® Corporation

GROUP: 077

1-077 - 90513



Metric Flange Bearings

DIN 1850 Form V Sinterbronze

Oil Impregnated Bronze

ASTM: B-438-73 Gr 1 Type II



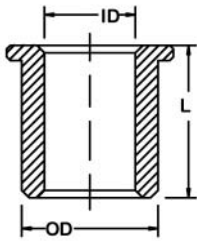
Part No.	ID	OD	L	Flange OD	Flange Thick-	Part No.	ID	OD	L	Flange OD	Flange Thick-
18-24x18-30X3	18	24	18	30	3	25-30x20-35X2.5	25	30	20	35	2.5
18-24x22-30X3	18	24	22	30	3	25-30x25-35X2.5	25	30	25	35	2.5
18-24x28-30X3	18	24	28	30	3	25-30x30-35X2.5	25	30	30	35	2.5
18-24x30-30X3	18	24	30	30	3	25-30x32-35X2.5	25	30	32	35	2.5
18-25x30-31x5	18	25	30	31	5	25-30x40-35X2.5	25	30	40	35	2.5
18-25x12-32x4	18	25	12	32	4	25-30x45-36x3	25	30	45	36	3
18-25x16-32x4	18	25	16	32	4	25-32x20-39X3.5	25	32	20	39	3.5
18-25x18-32x4	18	25	18	32	4	25-32x25-39X3.5	25	32	25	39	3.5
18-25x25-32x4	18	25	25	32	4	25-32x30-39X3.5	25	32	30	39	3.5
18-25x30-32x4	18	25	30	32	4	25-32x32-39X3.5	25	32	32	39	3.5
18-25x35-32x4	18	25	35	32	4	25-32x53-40x3	25	32	53	40	3
20-24x12-28X2	20	24	12	28	2	25-32x25-40x5	25	32	25	40	5
20-24x16-28X2	20	24	16	28	2	25-32x32-40x5	25	32	32	40	5
20-24x20-28X2	20	24	20	28	2	25-32x40-40x5	25	32	40	40	5
20-24x25-28X2	20	24	25	28	2	25-32x53-40x5	25	32	53	40	5
20-25x30-28x2	20	25	30	28	2	25-35x16-45X5	25	35	16	45	5
20-26x40-32x2	20	26	40	32	2	25-35x25-45X5	25	35	25	45	5
20-26x15-32X3	20	26	15	32	3	25-35x35-45x5	25	35	35	45	5
20-26x16-32X3	20	26	16	32	3	25-35x45-45x5	25	35	45	45	5
20-26x20-32X3	20	26	20	32	3	25-36x50-43x7	25	36	50	43	7
20-26x25-32X3	20	26	25	32	3	28-33x22-38X2.5	28	33	22	38	2.5
20-26x30-32X3	20	26	30	32	3	28-33x28-38X2.5	28	33	28	38	2.5
20-26x32-32X3	20	26	32	32	3	28-33x36-38X2.5	28	33	36	38	2.5
20-28x20-34x3	20	28	20	34	3	28-36x22-44X4	28	36	22	44	4
20-28x40-34.5x5.5	20	28	40	34.5	5.5	28-36x28-44X4	28	36	28	44	4
20-28x16-35X4	20	28	16	35	4	28-36x36-44X4	28	36	36	44	4
20-28x20-35X4	20	28	20	35	4	28-40x50-48x8	28	40	50	48	8
20-28x25-35x4	20	28	25	35	4	30-35x40-40x3	30	35	40	40	3
20-28x35-35x4	20	28	35	35	4	30-36x20-42x3	30	36	20	42	3
20-28x40-35x4	20	28	40	35	4	30-36x30-42x3	30	36	30	42	3
22-27x18-32X2.5	22	27	18	32	2.5	30-36x40-42x3	30	36	40	42	3
22-27x22-32X2.5	22	27	22	32	2.5	30-36x20-44X4	30	36	20	44	4
22-27x28-32X2.5	22	27	28	32	2.5	30-36x30-44X4	30	36	30	44	4
22-28x15-34X3	22	28	15	34	3	30-36x40-44X4	30	36	40	44	4
22-28x16-34X3	22	28	16	34	3	30-38x20-46X4	30	38	20	46	4
22-28x20-34X3	22	28	20	34	3	30-38x25-46X4	30	38	25	46	4
22-28x25-34X3	22	28	25	34	3	30-38x30-46X4	30	38	30	46	4
22-28x30-34X3	22	28	30	34	3	30-38x45-50x4	30	38	45	50	4
22-29x18-36X3.5	22	29	18	36	3.5	30-40x20-50X5	30	40	20	50	5
22-29x22-36X3.5	22	29	22	36	3.5	30-40x30-50X5	30	40	30	50	5
22-29x28-36X3.5	22	29	28	36	3.5	30-40x42-50x5	30	40	42	50	5
22-29x36-36X3.5	22	29	36	36	3.5	30-40x55-50x5	30	40	55	50	5
22-32x40-39x6	22	32	40	39	6	32-38x20-44X3	32	38	20	44	3
22-32x22-40x5	22	32	22	40	5	32-38x25-44X3	32	38	25	44	3
22-32x30-40x5	22	32	30	40	5	32-38x32-44X3	32	38	32	44	3
22-32x40-40x5	22	32	40	40	5						

Tolerance: Tolerances may vary for some sizes due to different molds available at time of manufacture.

Note: Inquire for additional standard and non-standard sizes. Cast bronze and steel bushings also available by special request.

Part No. = ID - OD x LENGTH - FLANGE OD x FLANGE THICKNESS





Metric Flange Bearings

DIN 1850 Form V Sinterbronze

Oil Impregnated Bronze

ASTM: B-438-73 Gr 1 Type II



Part No.	ID	OD	L	Flange OD	Flange Thick-	Part No.	ID	OD	L	Flange OD	Flange Thick-
32-40x50-45x5	32	40	50	45	5	45-55x55-65X5	45	55	45	65	5
32-40x20-48X4	32	40	20	48	4	45-55x30-65X6	45	55	55	65	5
32-40x25-48X4	32	40	25	48	4	45-55x45-65X6	45	55	30	65	6
32-40x30-48X4	32	40	30	48	4		45	55	45	65	6
32-40x32-48X4	32	40	32	48	4	45-56x28-67X5.5		56			
35-40x32-48X4	35	40	32	48	4	45-56x36-67X5.5	45	56	28	67	5.5
35-45x50-50x6	35	45	50	50	6	45-56x45-67X5.5	45	56	36	67	5.5
35-45x20-55X5	35	45	20	55	5		45	56	45	67	5.5
35-45x25-55X5	35	45	25	55	5	50-56x30-62X3		56			
35-45x35-55X5	35	45	35	55	5	50-56x32-62X3	50	56	30	62	3
35-45x40-55X5	35	45	40	55	5	50-56x40-62X3	50	56	32	62	3
36-42x22-48X3	36	42	22	48	3	50-56x50-62X3	50	56	40	62	3
36-42x28-48X3	36	42	28	48	3		50	56	50	62	3
36-42x36-48X3	36	42	36	48	3	50-60x32-70X5		60			
36-45x22-54X4.5	36	45	22	54	4.5	50-60x35-70X5	50	60	32	70	5
36-45x28-54X4.5	36	45	28	54	4.5	50-60x40-70X5	50	60	35	70	5
36-45x36-54X4.5	36	45	36	54	4.5	50-60x50-70X5	50	60	40	70	5
40-46x25-52X3	40	46	25	52	3		50	60	50	70	5
40-46x32-52X3	40	46	32	52	3	50-60x30-70X6		60			
40-46x40-52X3	40	46	40	52	3	50-60x50-70X6	50	60	30	70	6
40-50x30-60X5	40	50	30	60	5	50-60x60-70x6	50	60	50	70	6
40-50x32-60X5	40	50	32	60	5		50	60	60	70	6
40-50x40-60X5	40	50	40	60	5	55-64x45-71x5		64			
40-50x50-60X5	40	50	50	60	5		55	64	45	71	5
40-50x25-60X6	40	50	25	60	6	60-70x50-80X5		70			
40-50x40-60X6	40	50	40	60	6	60-70x60-80X5	60	70	50	80	5
40-50x50-60x6	40	50	50	60	6		60	70	60	80	5
40-50x60-60x6	40	50	60	60	6	60-72x50-84X6		72			
45-51x28-57X3	45	51	28	57	3	60-72x60-84X6	60	72	50	84	6
45-51x36-57X3	45	51	36	57	3		60	72	60	84	6
45-51x45-57X3	45	51	45	57	3	60-75x35-85X8		75			
45-55x35-65X5	45	55	35	65	5	60-75x60-85X8	60	75	35	85	8
45-55x45-65X5	45	55	45	65	5		60	75	60	85	8
						70-85x60-95X8		85			
							70	85	60	95	8
						80-95x70-105x8		95			
							80	95	70	105	8
						90-110x50-120X8		110			
							90	110	50	120	8
						100-120x80-130X8		120			
							100	120	80	130	8

Tolerance: Tolerances may vary for some sizes due to different molds available at time of manufacture.

Note: Inquire for additional standard and non-standard sizes. Cast bronze and steel bushings also available by special request.

Part No. = ID - OD x LENGTH - FLANGE OD x FLANGE THICKNESS

Oil and Grease Grooves



SINGLE LOOP



FIGURE EIGHT



ONE STRAIGHT AND ONE CIRCULAR



DOUBLE LOOP



DOUBLE FIGURE EIGHT



R.H. AND L.H. SPIRAL



STRAIGHT GROOVE



CIRCULAR GROOVE

Oil and Grease Grooves are available by special order.



Metric Sleeve Bearing

Sintered Self-Lubricating Materials

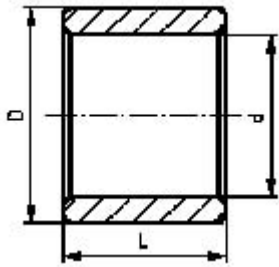


Materials Available

	Oil-Bronze*	Oil-Steel	Graphite-Bronze	Lead-Bronze	Ferro-Bronze
Approx. composition %					
Cu	89.5		78.0	80.0	45.0
Sn	9.3		8.0	10.0	4.5
C	1.2		6.0		1.0
Pb			8.0	10.0	
Fe		100.0			49.5
Density g/cm³	6.0	5.5	6.6	7.0	6.2
Oil Content volume %	25	25			20
Ultimate tensile strength Rm N/mm²	60	60	25	100	100
Elongation A %	1	2	0.5	3	1
Hardness HV 5	15	20	15	35	40
Linear expansion x 10⁻⁶/K	18	12	14	18	15
Thermal conductivity W/m x K	40	30		40	35
Coefficient of friction					
pv/Nmm ² x m/s Continuous service Life 10,000 hours	1.6	1.6	0.4	1.3	1.7
p max (N/mm ²) Continuous service Surface velocity approx. 0.17 m/s	10	9.5	2.5	10	10
p max (N/mm ²) Static load 0.1% deformation	50	50	40	50	50
v max (m/s) Continuous service	5	5	0.25	5	5
Corresponding Standards	ASTM B 438 grad 1 typ 1 SAE 840 Sint-A 51 ISO 5755/1 P 4021 Z MPIF CTG-1001-K17 RoHS	ASTM B 439 grad 1 SAE 850 Sint-A 00 ISO 5755/1 P 1011 Z MPIF F-0000-K15 RoHS			

* Standard material for stock sleeve bearings. RoHS COMPLIANT

Call to check delivery on non-standard material.



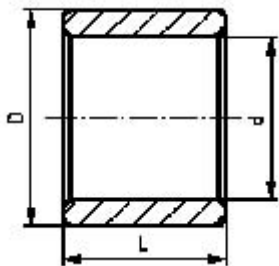
Metric Nylon Sleeve Bearings

Injection molded polyimide 6.6



Part No.	ID d	OD D	L	Wt. g	Part No.	ID d	OD D	L	Wt. g	Part No.	ID d	OD D	L	Wt. g
N8-12x10	8	12	10	1.0	N20-24x15	20	24	15	2.5	N32-36x30	32	36	30	
N8-14x10	8	14	10	2.0	N20-25x15	20	25	15	3.0	N32-40x30	32	40	30	15.5
N10-12x10	10	12	10	0.5	N20-26x20	20	26	20	5.0	N40-45x40	40	45	40	14.5
N10-14x10	10	14	10	1.0	N20-28x20	20	28	20	7.0	N40-48x40	40	48	40	
N10-16x10	10	16	10	1.5	N20-30x20	20	30	20	9.0	N40-50x40	40	50	40	32.0
N12-14x10	12	14	10	0.7	N25-30x20	25	30	20	5.0	N50-58x50	50	56	50	
N12-16x10	12	16	10	1.0	N25-30x32	25	30	32	7.8	N50-60x50	50	60	50	48.5
N12-18x14	12	18	14	1.0	N25-32x20	25	32	20	7.0	N54-62x60	54	62	60	
N15-20x15	15	20	15	2.5	N25-35x20	25	35	20	10.5	N54-70x60	60	70	60	68.0
N15-22x15	15	22	15	3.0	N28-32x20	28	32	20	5.0					
N15-25x15	15	25	15	3.5	N28-38x19	28	38	19	6.0					
N16-20x15	16	20	15	2.0	N30-35x20	30	35	20	5.7					
N16-22x15	16	22	15	3.2	N30-36x30	30	36	30	10.5					
N16-24x15	16	24	15	4.2	N30-40x30	30	40	30	12.0					

Part No. = ID - OD x LENGTH

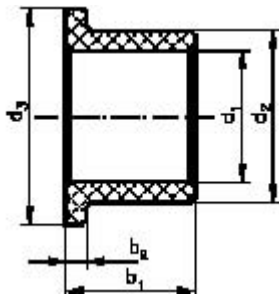


PTFE (Teflon® type material) Sleeve Split Bearings



Part No.	ID d	OD D	L	Wt. g	Part No.	ID d	OD D	L	Wt. g	Part No.	ID d	OD D	L	Wt. g
ST3-4.5x4	3	4.5	4	0.1	ST12-14x10	12	14	10	3.0	ST25-28x25	25	28	25	23.9
ST3-4.5x5	3	4.5	5	0.3	ST12-14x12	12	14	12	3.7	ST25-28x30	25	28	30	28.4
ST3-4.5x6	3	4.5	6	0.4	ST12-14x15	12	14	15	4.7	ST25-28x40	25	28	40	37.3
ST4-5.5x4	4	5.5	4	0.3	ST12-14x20	12	14	20	6.1	ST26-30x15	26	30	15	15.6
ST4-5.5x6	4	5.5	6	0.6	ST14-16x10	14	16	10	3.6	ST26-29x20	26	29	20	26.1
ST4-5.5x8	4	5.5	8	0.9	ST14-16x20	14	16	20	7.1	ST26-29x30	26	29	30	39.0
ST5-7x5	5	7	5	0.7	ST15-14x10	15	17	10	3.8	ST28-32x20	28	32	20	28.8
ST5-7x8	5	7	8	1.1	ST15-17x12	15	17	12	4.5	ST28-32x25	28	32	25	39.0
ST6-8x5	6	8	5	0.7	ST15-17x15	15	17	15	5.7	ST30-34x12	30	34	12	17.5
ST6-8x6	6	8	6	0.9	ST15-17x20	15	17	20	7.6	ST30-34x15	30	34	15	22.9
ST6-8x10	6	8	10	1.7	ST16-18x10	16	18	10	4.6	ST30-34x20	30	34	20	30.9
ST7-9x10	7	9	10	1.8	ST16-18x15	16	18	15	6.1	ST30-34x30	30	34	30	46.1
ST8-10x6	8	10	6	1.2	ST16-18x20	16	18	20	8.1	ST30-34x35	30	34	35	53.0
ST8-10x8	8	10	8	1.7	ST16-18x25	16	18	25	10.1	ST32-36x20	32	36	20	32.0
ST8-10x10	8	10	10	2.1	ST18-20x20	18	20	20	8.9	ST32-36x25	32	36	25	40.2
ST9-11x10	9	11	10	2.2	ST20-23x10	20	23	10	7.5	ST35-39x20	35	39	20	35.4
ST10-12x6	10	12	6	1.9	ST20-23x12	20	23	12	6.8	ST35-39x40	35	39	40	70.8
ST10-12x8	10	12	8	2.0	ST20-23x15	20	23	15	11.6	ST38-42x30	38	42	30	56.9
ST10-12x10	10	12	10	2.5	ST20-23x20	20	23	20	15.1	ST40-44x20	40	44	20	40.0
ST10-12x12	10	12	12	2.9	ST20-23x30	20	23	30	23.0	ST10-44x30	40	44	30	60.2
ST10-12x15	10	12	15	3.8	ST22-25x20	22	25	20	16.6	ST40-44x50	40	44	50	101.5
ST10-12x20	10	12	20	5.3	ST24-27x25	24	27	25	23.8	ST50-55x30	50	55	30	95.0
ST12-14x6	12	14	6	1.7	ST25-28x15	25	28	15	14.2	ST50-55x50	50	55	50	159.9
ST12-14x8	12	14	8	2.0	ST25-28x20	25	28	20	10.0					

Part No. = ID - OD x LENGTH



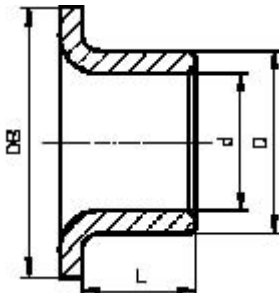
Metric Nylon Flange Bearings

Injection molded polyamide 6.6



Part No.	d ₁	d ₂	b ₁	d ₃	b ₂	Wt. g	Part No.	d ₁	d ₂	b ₁	d ₃	b ₂	Wt. g
N6-10x8-15x1.5	6	10	8	15	1.5	0.8	N25-32x20-40x3	25	30	20	36	3	6.0
N8-12x6-16x2	8	12	6	16	2	0.8		25	32	20	40	3	8.5
N8-14x10-20x2	8	14	10	20	2	1.7	N25-35x20-45x3						
N10-12x6-16x2	10	12	6	16	2	0.6	N25-35x30-45x4	25	35	20	45	3	12.7
N10-14x10-20x2	10	14	10	20	2	1.3	N28-32x30-40x4	25	35	30	45	4	18.5
							N28-38x30-48x4	28	32	30	40	4	8.0
N10-16x10-20x2	10	16	10	20	2	1.8	N30-32x30-40x4	28	38	30	48	4	20.0
N12-14x10-20x2	12	14	10	20	2	1.0		30	32	30	40	4	5.0
N12-16x10-20x2	12	16	10	20	2	1.5	N30-35x30-45x4						
N14-20x24-30x2	14	20	24	30	2	2.8	N30-38x30-48x4	30	35	30	45	4	11.5
N16-20x15-28x2	16	20	15	28	2	2.8	N32-35x30-45x4	30	38	30	48	4	17.0
							N32-38x30-48x4	32	35	30	45	4	10.0
N16-22x15-30x2	16	22	15	30	2	4.0	N32-40x30-50x4	32	38	30	48	4	18.5
N16-24x15-30x2	16	24	15	30	2	5.0		32	40	30	50	4	19.0
N20-24x15-30x2	20	24	15	30	2	3.0	N40-44x40-54x5						
N20-25x15-30x2	20	25	15	30	2	3.5	N40-48x40-58x5	40	44	40	54	5	16.5
N20-26x12-30x2	20	26	12	30	2	3.5	N40-50x40-60x5	40	48	40	58	5	30.0
							N50-56x50-70x5	40	50	40	60	5	36.0
N20-26x15-32x2	20	26	15	32	2	4.5	N50-60x50-70x5	50	56	50	70	5	42.0
N20-26x20-32x3	20	26	20	32	3	5.8	N60-70x60-80x5	50	60	50	70	5	52.0
N20-30x20-36x3	20	30	20	36	3	9.7		60	70	60	80	5	74.0

Part No. = ID - OD x LENGTH - FLANGE OD X FLANGE THICKNESS



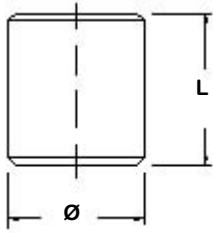
PTFE (Teflon® type material) Flange Split Bearings



Part No.	d	D	L	DB	Wt. g	Part No.	d	D	L	DB	Wt. g
ST3-4.6x5-7	3	4.6	5.0	7	0.3	ST15-17x17-23	15	17	17.0	23	8.5
ST4-5.6x5-9	4	5.6	5.0	9	0.5	ST16-18x17-24	16	18	17.0	24	9.1
ST5-7x6-10	5	7	6.0	10	0.9	ST18-20x12-26	18	20	12.0	26	6.6
ST6-8x7-12	6	8	7.0	12	1.4	ST20-23x11.5-30	20	23	11.5	30	13.7
ST8-10x5.5-15	8	10	5.5	15	1.9	ST22-25x21.5-33	22	25	21.5	33	21.0
ST8-10x9.5-15	8	10	9.5	15	2.3	ST25-28x26.5-35	25	28	26.5	35	27.3
ST10-12x9-18	10	12	9.0	18	2.9	ST30-34x30-42	30	34	30.0	42	53.3
ST10-12x12-18	10	12	12.0	18	4.0	ST35-39x26-47	35	39	26.0	47	46.0
ST12-14x17-20	12	14	17.0	20	5.6	ST35-39x40-49	35	39	40.0	49	81.4
ST14-16x17-22	14	16	17.0	22	6.2	ST40-44x26-53	40	44	26.0	53	92.0
ST15-17x12-23	15	17	12.0	23	5.0	ST50-55x22-60	50	55	22.0	60	145.8

Part No. = ID - OD x LENGTH - FLANGE OD

Metric Sintered Self-Lubricating Bars



Part No.	Material	Diameter Ø	Length L
BAR 20X52 B	Oil-Bronze	20	52
BAR 30X52 B		30	52
BAR 40X52 B		40	52
BAR 50X60 B		50	60
BAR 60X60 B		60	60
BAR 80X80 B		80	80
BAR 10X22 G	Graphite-Bronze	10	22
BAR 20X52 G		20	52
BAR 30X52 G		30	52
BAR 40X52 G		40	52
BAR 50X60 G		50	60
BAR 60X60 G		60	60
BAR 80X80 G		80	80

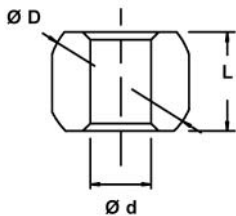
Machining

Machining of self-lubricated bearings should be avoided. Casting produces a far superior bearing. Oil-Bronze and Graphite-Bronze should be turned with diamond or carbide tips, quality ISO K 20, with a tip radius of max. 0.1-0.2 mm. Suitable cutting speeds are 100-200 m/min.

The bearing surface of self-lubricating bearings must not be ground as the oil transportation pores are then closed. The outer surface of bearing can be machined in any way required. The bearing can be heated on an electrical hot plate after machining to check that the pores are still open. Oil will then ooze out of the pores.

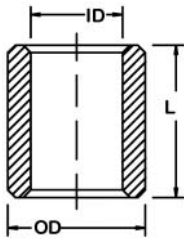
Bearings usually lose oil during the turning operation and the oil should be replaced before the bearing is used. A simple method of doing this is accomplished by immersing the bearing in oil SAE 20 heated to 80°C (176°F). The bearing should be immersed until the oil has cooled. The pores are filled with oil by this process and the bearing is then ready for use.

Metric Sintered Self-Lubricating Spherical Bearings



Inside Ø d H7	Outside Ø D h11	Length L h13	Inside Ø d H7	Outside Ø D h11	Length L h13
2	5	3	8	16	11
3	8	6	8	19	14
4	10	8	9	22	14
5	10	7	10	18	12
5	13	10	10	22	14
6	12	8	12	25	20
6	15	11	16	30	20
7	16	11	20	40	25
			25	50	30

Non-Stock, request price (quantity sensitive)



Metric Sleeve Bearing

Cast Bronze SAE 660



Part No.	ID	OD	L	Part No.	ID	OD	L	Part No.	ID	OD	L	Part No.	ID	OD	L
CB 8-12x20	8	12	20	CB16-24x80	16	24	80	CB 30-40x100	30	40	100	CB 50-55x60	50	55	60
CB 8-12x30	8	12	30	CB 20-24x50	20	30	50	CB 30-40x50	30	40	50	CB 50-60x100	50	60	100
CB 8-12x40	8	12	40	CB 20-24x80	20	30	80	CB 35-40x100	35	40	100	CB 50-60x60	50	60	60
CB 10-16x20	10	16	20	CB 20-30x50	20	30	50	CB 35-40x50	35	40	50	CB 56-65x100	56	65	100
CB 10-16x30	10	16	30	CB 20-30x80	20	30	80	CB 35-45x100	35	45	100	CB 56-65x60	56	65	60
CB 10-16x50	10	16	50	CB 25-30x100	25	30	100	CB 35-45x60	35	45	60				
CB 12-16x20	12	16	20	CB 25-30x40	25	30	40	CB 39-45x100	39	45	100				
CB 12-16x30	12	16	30	CB 25-30x50	25	30	50	CB 39-45x60	39	45	60				
CB 12-16x40	12	16	40	CB 25-30x60	25	30	60	CB 39-50x100	39	50	100				
CB 12-16x50	12	16	50	CB 25-35x100	25	35	100	CB 39-50x60	39	50	60				
CB 12-20x30	12	20	30	CB 25-35x30	25	35	30	CB 45-50x100	45	50	100				
CB 12-20x40	12	20	40	CB 25-35x40	25	35	40	CB 45-50x60	45	50	60				
CB 12-20x50	12	20	50	CB 25-35x50	25	35	50	CB 45-55x100	45	55	100				
CB 16-20x20	16	20	20	CB 25-35x60	25	35	60	CB 45-55x60	45	55	60				
CB 16-20x30	16	20	30	CB 30-35x100	30	35	100	CB 50-55x100	50	55	100				
CB 16-20x40	16	20	40	CB 30-35x30	30	35	30								
CB 16-20x60	16	20	60	CB 30-35x40	30	35	40								
CB 16-24x50	16	24	50	CB 30-35x50	30	35	50								

Tolerance: Inside Diameter + 0.25 mm
 Outside Diameter +0.060/ + 0.100 mm
 Length +25 mm

Note: Inquire for additional standard and non-standard sizes. Oil and grease grooves available